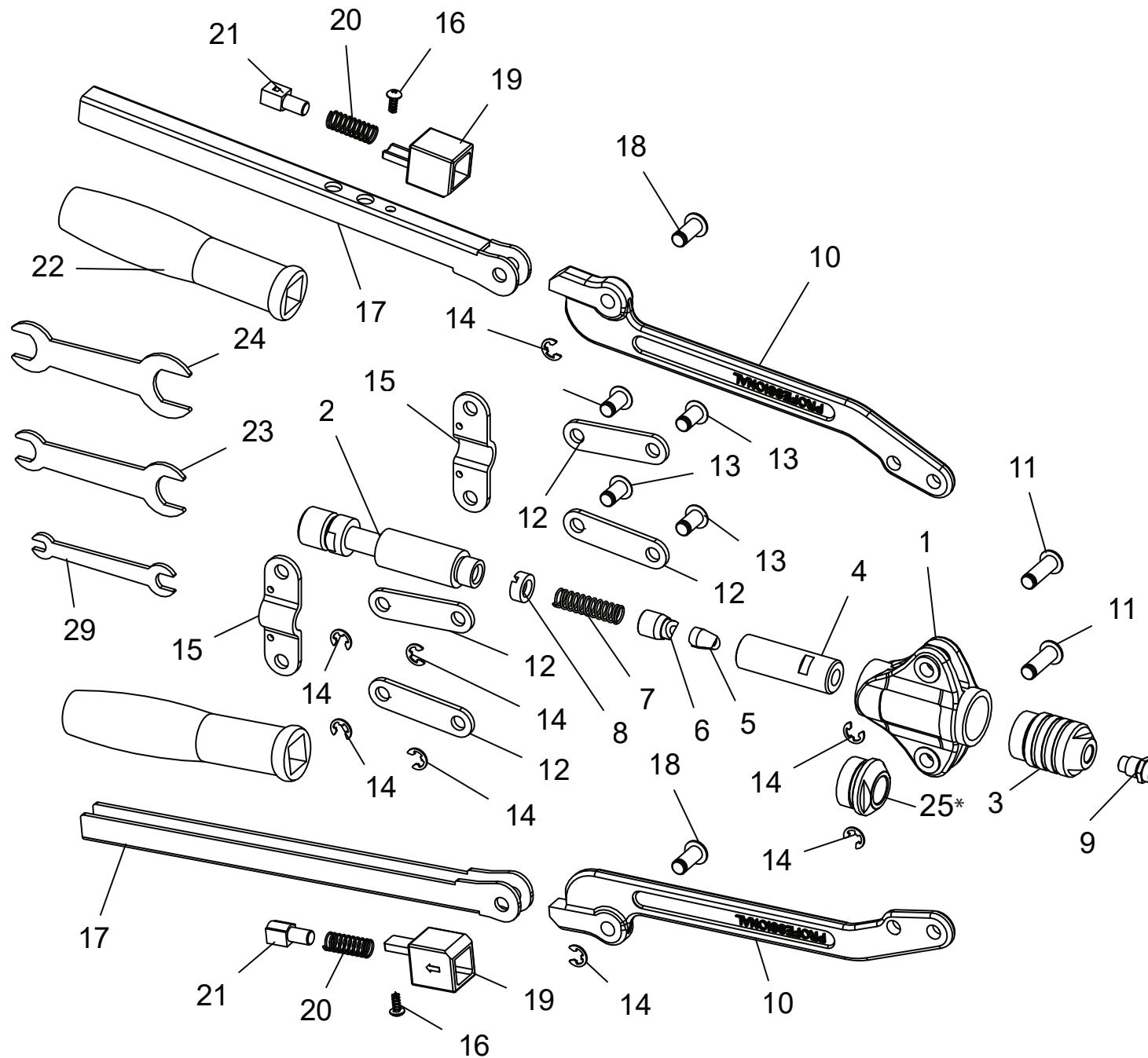


Parts Diagram

Schéma des Pièces
Diagrama de Partes

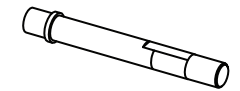


Rivet Nosepiece



9*

Rivet Nut Mandrel



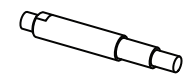
26*

Rivet Nut/Stud Fixing Screw



27*

Rivet Stud Mandrel



30*

* See details on next page

| ID | DESCRIPTION | NOTE |
|----|-------------------------------|-----------------|
| 1 | HEAD FRAME | |
| 2 | DRAWBAR LEAD | |
| 3 | SLEEVE SEAT (FOR BLIND RIVET) | |
| 4 | JAWCASE | |
| 5 | JAW | |
| 6 | JAW PUSHER | |
| 7 | JAWCASE SPRING | |
| 8 | JAWCASE LOCK NUT | |
| 9 | RIVET NOSEPIECE | DETAIL ON RIGHT |
| 10 | LEVER ARM | |
| 11 | PIN | |
| 12 | CONNECTING PIECE | |
| 13 | PIN | |
| 14 | E6 RING | |
| 15 | BALANCING PIECE | |
| 16 | SCREW | |
| 17 | HANDLE | |
| 18 | PIN | |
| 19 | HANDLE LOCK | |
| 20 | SPRING | |
| 21 | HANDLE LOCK SPRING STOPPER | |
| 22 | GRIP | |
| 23 | SPANNER | |
| 24 | SPANNER | |
| 25 | SLEEVE SEAT (FOR RIVET NUT) | DETAIL ON RIGHT |
| 26 | RIVET NUT MANDREL | DETAIL ON RIGHT |
| 27 | RIVET NUT/STUD FIXING SCREW | DETAIL ON RIGHT |
| 29 | SPANNER | |
| 30 | RIVET STUD MANDREL | DETAIL ON RIGHT |

#5 - Jaws

| | |
|----------|----------------|
| One Size | 10J-002 (Pair) |
|----------|----------------|

#9 - Rivet Nosepiece

| Size | SKU |
|---------------|--------------------|
| 1/8" (3.2mm) | 10N-012 |
| 5/32"(4.0 mm) | 10N-013 |
| 3/16"(4.8 mm) | 10N-014 |
| 1/4"(6.4 mm) | 10N-015 |
| 1/4"(6.4 mm) | 10N-016 Structural |

#25 - Rivet Nut Sleeve Seat

| Size | SKU |
|--------------------|---------|
| #8 - 3/8" (M4-M10) | 10S-012 |
| 1/2" (M12) | 10S-013 |

#26 - Rivet Nut Mandrel

| Standard | Size | SKU |
|------------|------------|-------------|
| Metric | M4 | 10M-121M |
| | M5 | 10M-122M |
| | M6 | 10M-123.2M |
| | M8 | 10M-124.2M |
| | M10 | 10M-125M |
| | M12 | 10M-126M |
| | SAE UNC | 8-32" |
| 10-24" | | 10M-122S |
| 1/4-20" | | 10M-123.2S |
| 5/16-18" | | 10M-124.2S |
| 3/8-16" | | 10M-125S |
| 1/2-13" | | 10M-126S |
| SAE UNF | 8-36" | 10M-121SF |
| | 10-32" | 10M-122SF |
| | 1/4-28" | 10M-123SF |
| | 5/16-24" | 10M-124.2SF |
| | 3/8-24" | 10M-125SF |
| | 1/2-20" | 10M-126SF |

#27 - Rivet Nut/Stud Fixing Screw

| Size | SKU |
|-----------|---------|
| M4, #8" | 10N-121 |
| M5, #10" | 10N-122 |
| M6, 1/4" | 10N-123 |
| M8, 5/16" | 10N-124 |
| M10, 3/8" | 10N-125 |
| M12, 1/2" | 10N-126 |

#30 - Rivet Stud Mandrel

| Standard | Size | SKU |
|------------|----------|------------|
| Metric | M4 | 10M-141M |
| | M5 | 10M-142M |
| | M6 | 10M-143M |
| | M8 | 10M-144.2M |
| SAE UNC | 8-32" | 10M-141S |
| | 10-24" | 10M-142S |
| | 1/4-20" | 10M-143S |
| | 5/16-18" | 10M-144.2S |